

One Bayshill

Bayshill Road | Cheltenham | GL50 3FH



la AGENCY

One Bayshill

Bayshill Road | Cheltenham | GL50 3FH

SITUATED IN THE HEART OF MONTPPELLIER, ONE OF CHELTENHAM'S MOST PRESTIGIOUS AND SOUGHT-AFTER LOCATIONS, THIS EXCEPTIONAL LATER LIVING APARTMENT FORMS PART OF THE HIGHLY REGARDED ONE BAYSHILL ROAD DEVELOPMENT FOR RESIDENTS AGED 60 AND OVER.

DESIGNED WITH COMFORT, ELEGANCE AND CONVENIENCE IN MIND, THE DEVELOPMENT OFFERS AN OUTSTANDING LIFESTYLE WITH EXCLUSIVE RESIDENT AMENITIES INCLUDING A SWIMMING POOL, SPA, SAUNA, GYM AND BEAUTIFULLY MAINTAINED COMMUNAL AREAS.



First Floor

- Open plan sitting | dining room | kitchen
- Principal bedroom with dressing room & ensuite
- Bedroom two / home office
- Bathroom
- Balcony

Facilities

- Communal lounge and roof terrace
- Swimming pool
- Sauna & steam room
- Gym
- On-site restaurant
- 24-hour video entry
- Dedicated staff on site

Location

- Ideally positioned for Montpellier amenities
- Access to A417/M4 to London
- Cheltenham Spa train station is close by
- Good connections to the centre of Cheltenham
- A40 to Oxford and M5 towards Bristol

The Property

An elegant first-floor apartment enjoying attractive views over Bayshill Road. The principal living space is beautifully light and thoughtfully arranged, featuring an open-plan sitting and dining area alongside a contemporary, fully fitted kitchen with integrated appliances. Doors open onto a private balcony, creating a wonderful space to relax and enjoy the outlook.

The principal bedroom suite is generously proportioned and features a fitted walk-in dressing room and a well-appointed en-suite shower room. A second bedroom provides versatile accommodation and is currently arranged as an occasional guest bedroom and home office. A separate modern bathroom completes the accommodation.

Residents at One Bayshill Road enjoy an exceptional range of exclusive on-site amenities, including a beautifully appointed communal lounge and roof terrace, alongside a gym and wellness spa featuring a sauna, salt and steam rooms, and a hydrotherapy pool. The development also benefits from an on-site restaurant, offering a welcoming place to meet friends for coffee, lunch or a relaxed catch-up.

Peace of mind is an important part of everyday living. At One Bayshill Road, residents benefit from an advanced security





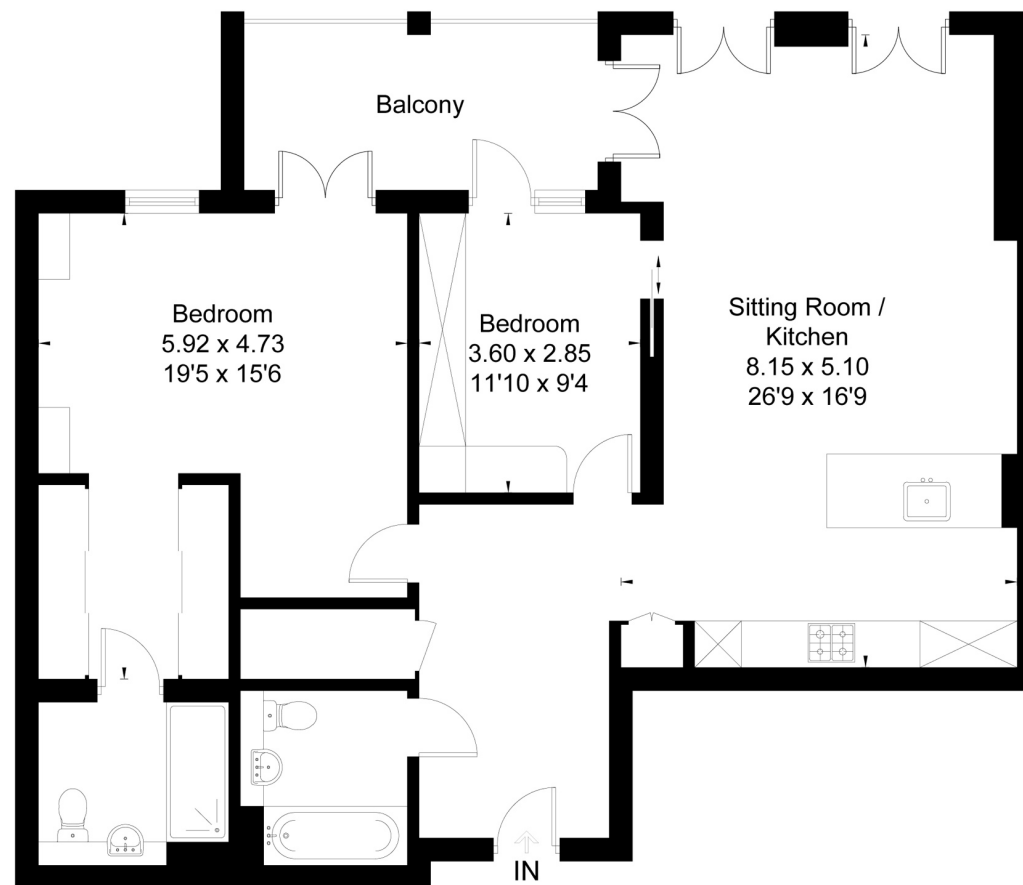
system, including 24-hour video entry, as well as a dedicated on-site team available seven days a week.

Location

Located in the heart of Cheltenham, the convenience is endless. Cheltenham Spa railway station is approximately 1.2 miles away, offering direct services to London Paddington, Birmingham, and Bristol. The property is well placed for road links, with the M5 accessible via the A40 and the A417 providing easy access to Cirencester and the Cotswolds. Local bus routes and nearby taxi services ensure convenient connections throughout Cheltenham and beyond.







First Floor



This floor plan has been drawn in accordance with RICS Property Measurement 2nd edition.
All measurements, including the floor area, are approximate and for illustrative purposes only. @fourwalls-group.com #104411

hello@laagency.co.uk
01242 500 404
lagagency.co.uk

The Limes, Bayshill Road,
Cheltenham GL50 3AW

rightmove ZOOPLA

PrimeLocation.com

la AGENCY